



UNIVERSITY *of*  
WEST FLORIDA

# Hurricane Season: Are you Ready?

*Captain David Faircloth, Emergency Manager*

**Stay away  
Jim Cantore!**



University of West Florida Police Department

## TRESPASS WARNING



Occupation: WEATHER MAN

Employer: THE WEATHER CHANNEL

**PERSON OF INTEREST: JIM CANTORE**

**SPECIAL CONDITIONS:**

**NON-BUSINESS RELATED VISITS ONLY WINTER  
MONTHS PREFERRED**

**UNIVERSITY OF WEST FLORIDA  
POLICE DEPARTMENT**

THIS IS NOT REAL TRESPASS, WE LIKE JIM, JUST NOT UNDER THESE CONDITIONS.

# Hurricane Season 2021

- **June 1, 2021 – November 30, 2021**

- **2021 Prediction**

- 20 tropical storms
- 8 hurricanes



15 Sep 2020 18:20Z NOAA/NESDIS/STAR GOES-East GEOCOLOR

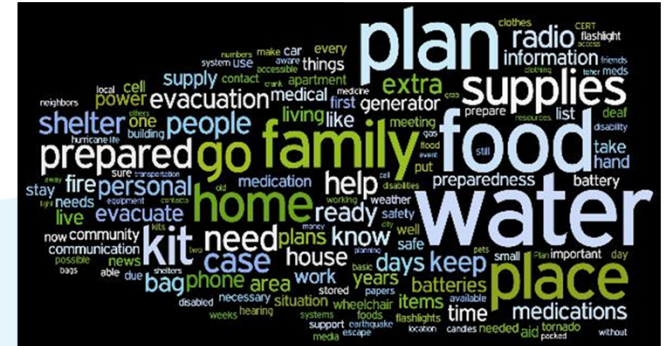
**Hurricane Sally**

## Atlantic Storm Names

Ana	Fred	Kate	Peter	Wanda
Bill	Grace	Larry	Rose	
Claudette	Henri	Mindy	Sam	
Danny	Ida	Nicholas	Teresa	
Elsa	Julian	Odette	Victor	

# Make a Personal Plan

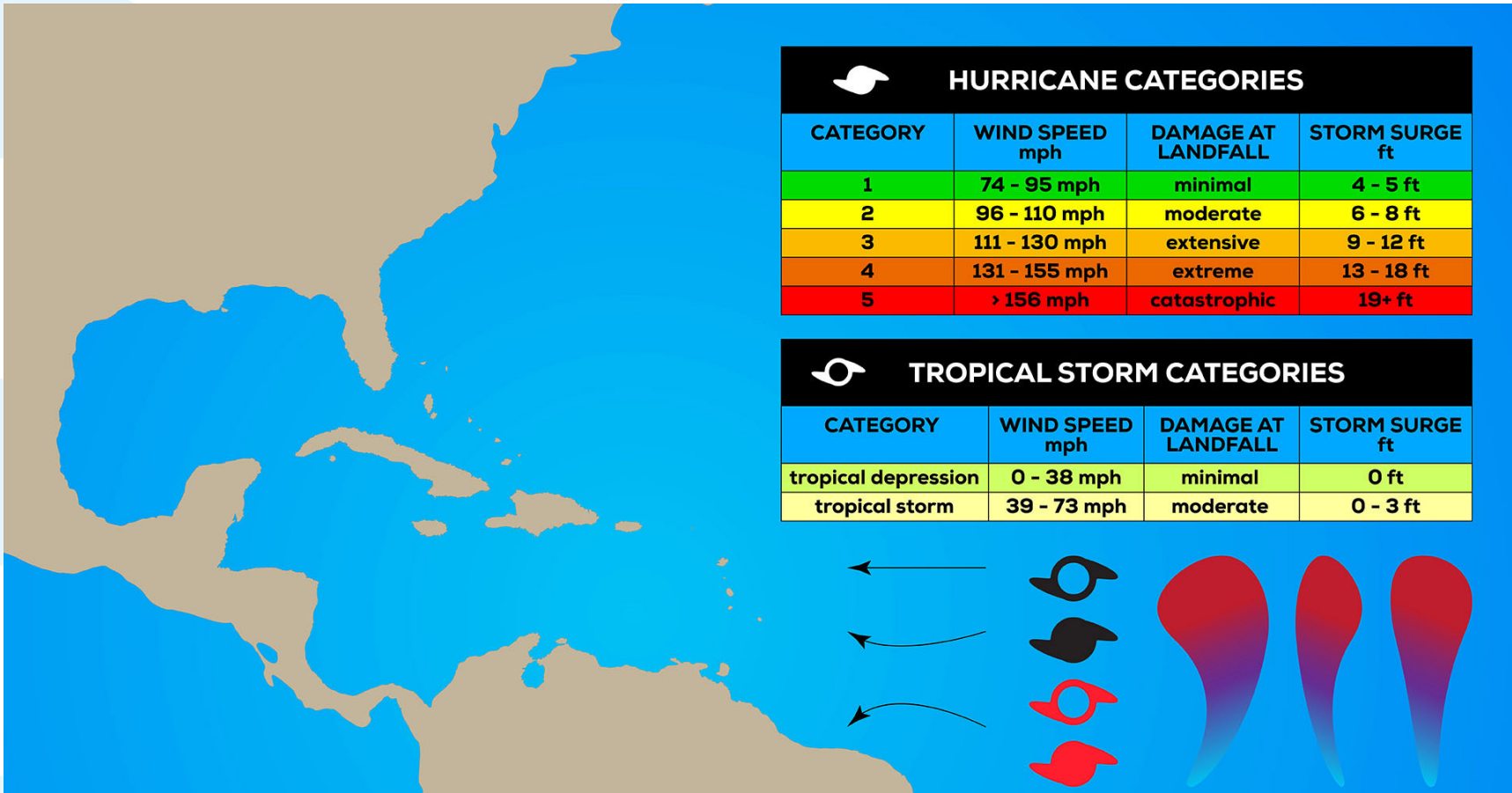
Some factors to consider when developing your own plan:



- How will I receive **emergency alerts and warnings**?
- What is my **evacuation** route?
- How will I **communicate** to my family/household?
- Where do I **shelter**?
- What will I do with my **pet**?
- What **documents** do I need to store and/or carry?
- Do I have **special needs** (e.g., medical, dietary, etc.)?

<https://myescambia.com/our-services/public-safety/bereddy>

# Saffir-Simpson Hurricane Wind Scale



- TROPICAL STORM WATCH

- Sustained winds **39-73mph** possible within specified area within 48 hours.

- TROPICAL STORM WARNING

- Sustained winds **39-73mph** expected within specified area within 36 hours.

- HURRICANE WATCH

- Sustained winds **74mph or greater** possible within specified area. Because it may not be safe to prepare for a hurricane once winds reach tropical storm force, the National Hurricane Center (NHC) issues **hurricane watches 48 hours** before it anticipates tropical storm-force winds.

- HURRICANE WARNING

- Sustained winds **74mph or greater** expected within specified area. NHC issues a hurricane warning **36 hours in advance** of tropical storm-force winds to give you time to complete your preparations. All preparations should be complete. Evacuate immediately if so ordered.
-

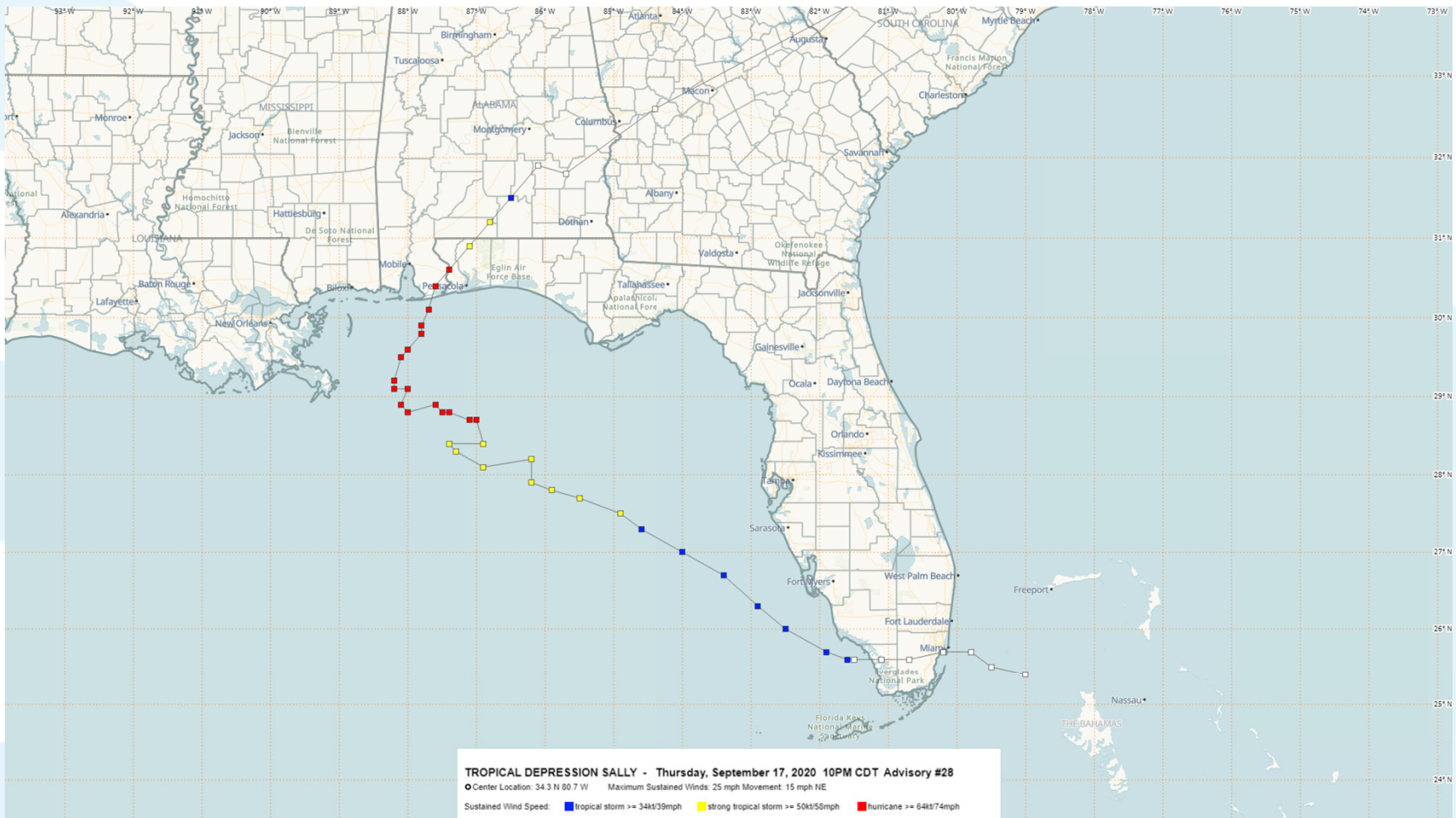
# Forecast Cone

Radii of NHC and CPHC forecast cone circles for 2021, based on error statistics from 2016-2020:

Forecast Period (hours)	2/3 Probability Circle, Atlantic Basin (nautical miles)
12	27
24	40
36	55
48	69
60	86
72	102
96	148
120	200

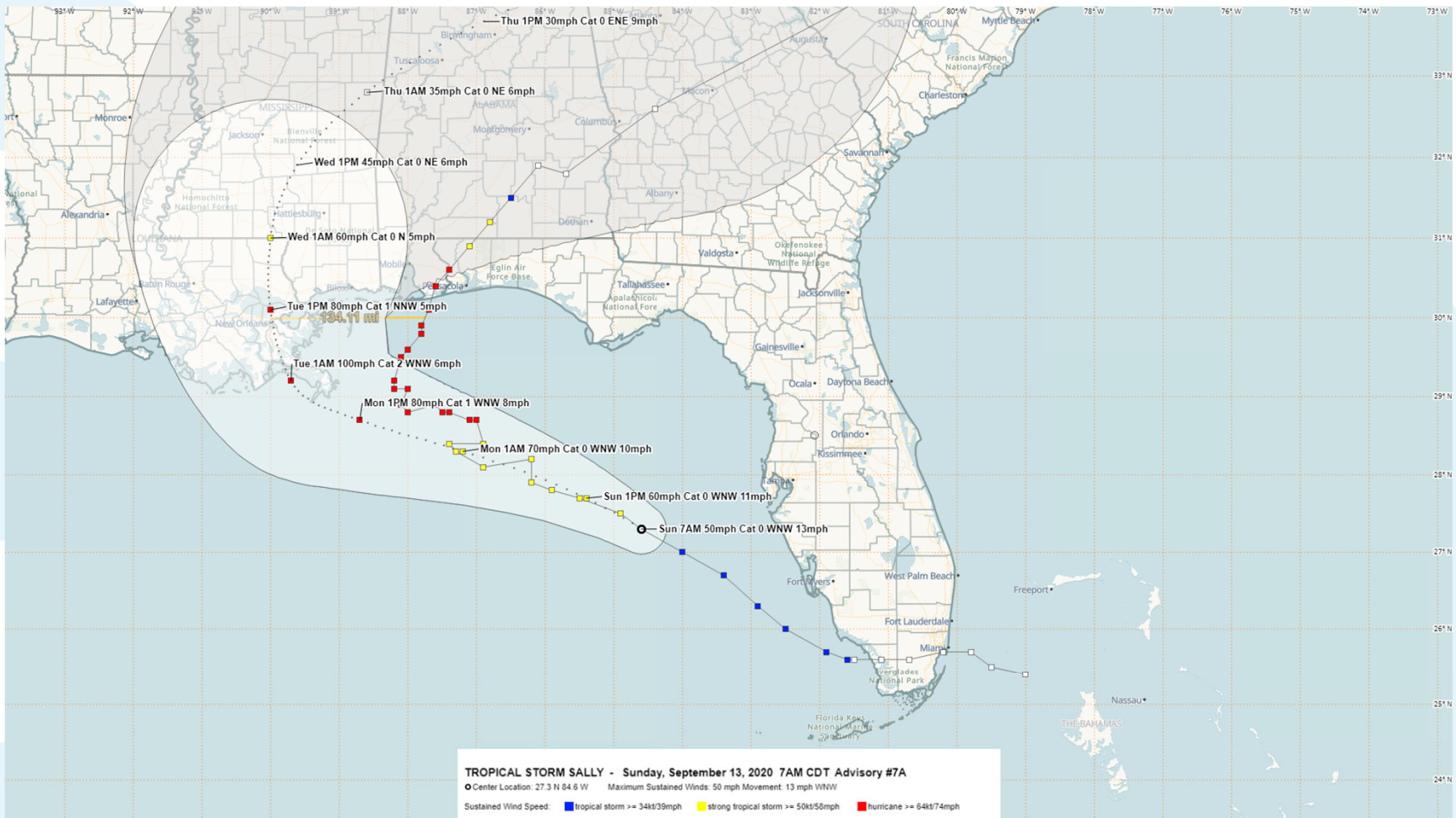
The cone represents the probable track of the center of a tropical cyclone, and is formed by enclosing the area swept out by a set of circles along the forecast track (at 12, 24, 36 hours, etc.). The size of each circle is set so that two-thirds of historical official forecast errors over a 5-year sample fall within the circle.

# Hurricane Sally

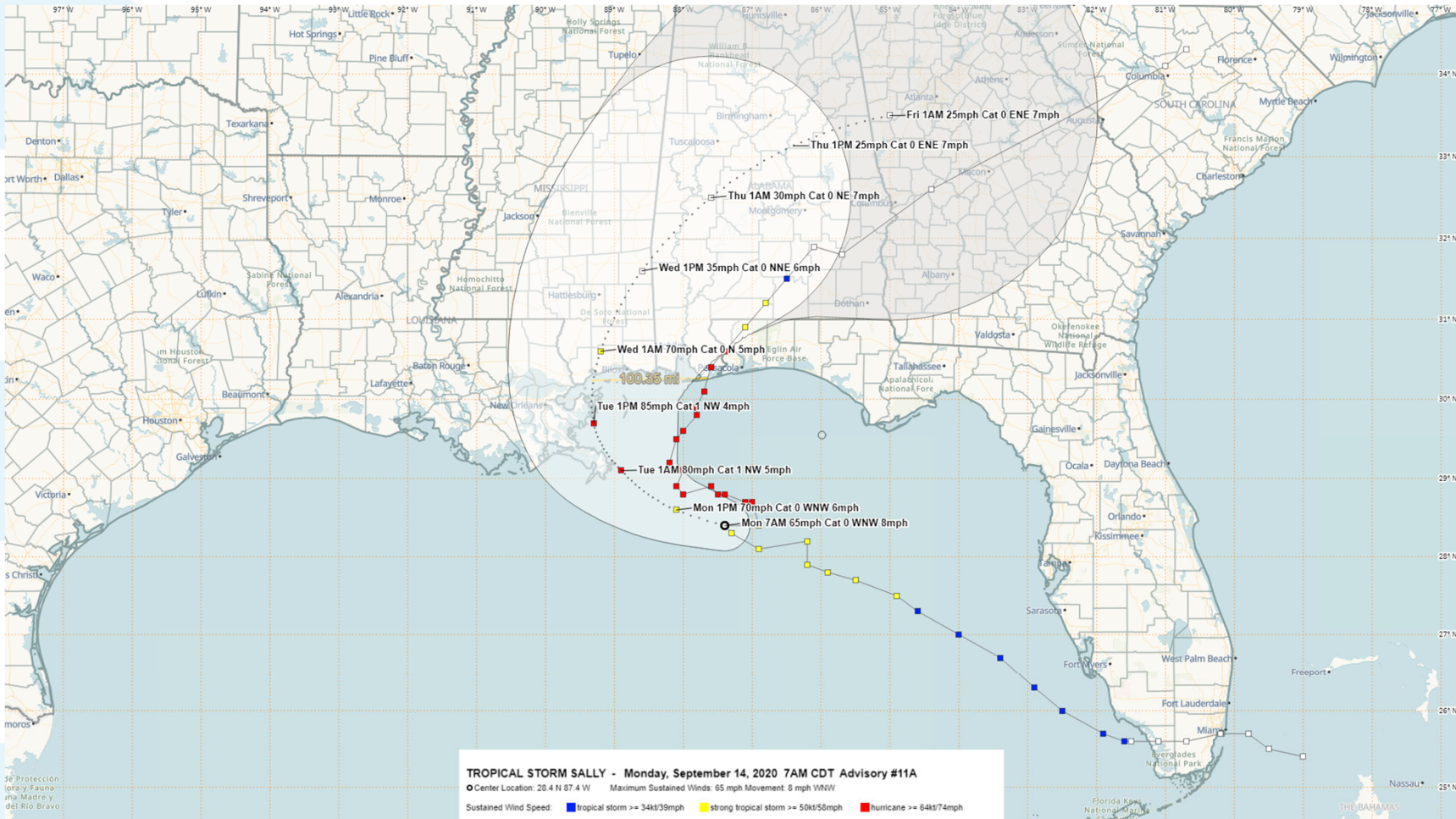




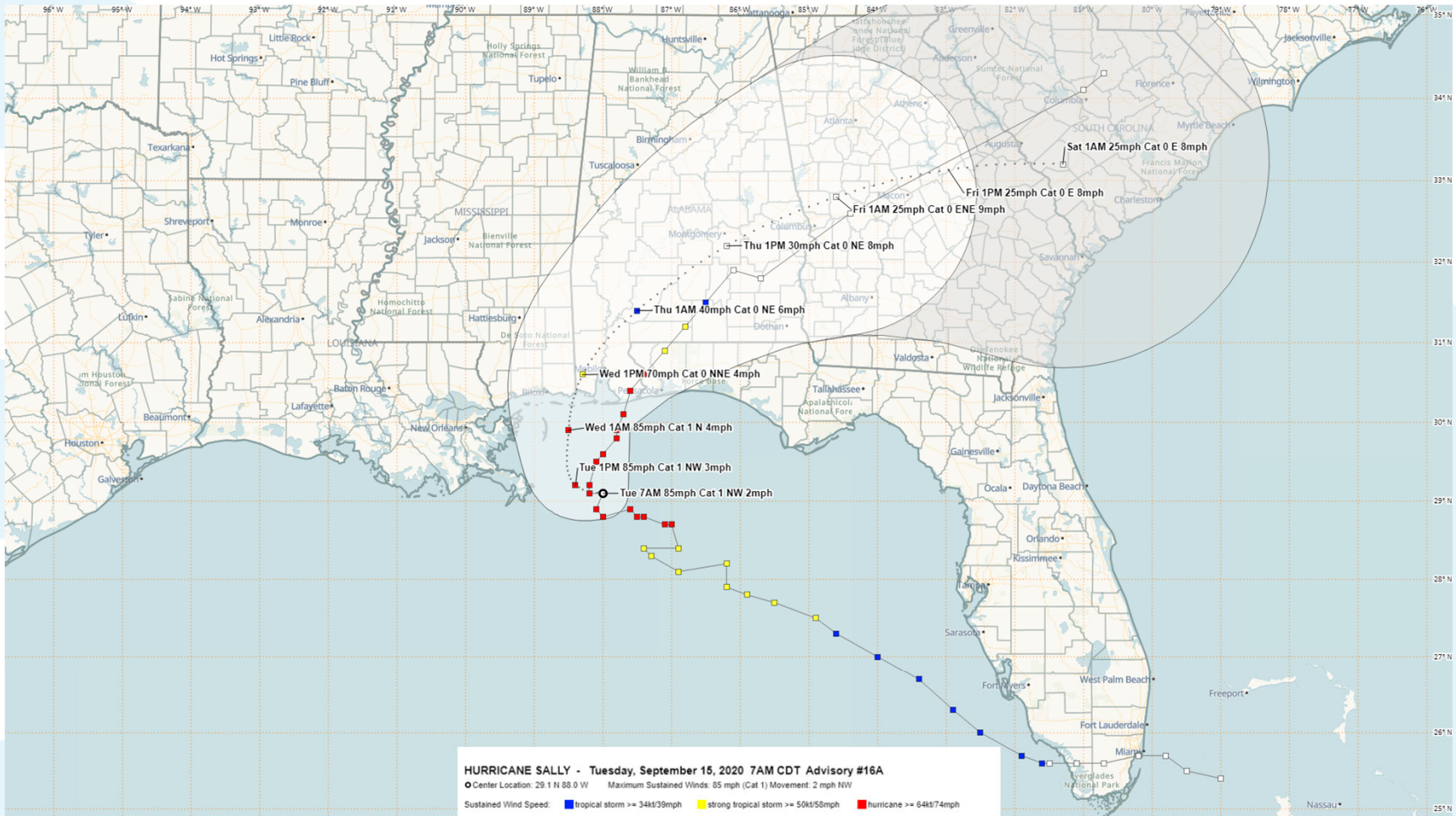
# Sally -3 Days Out



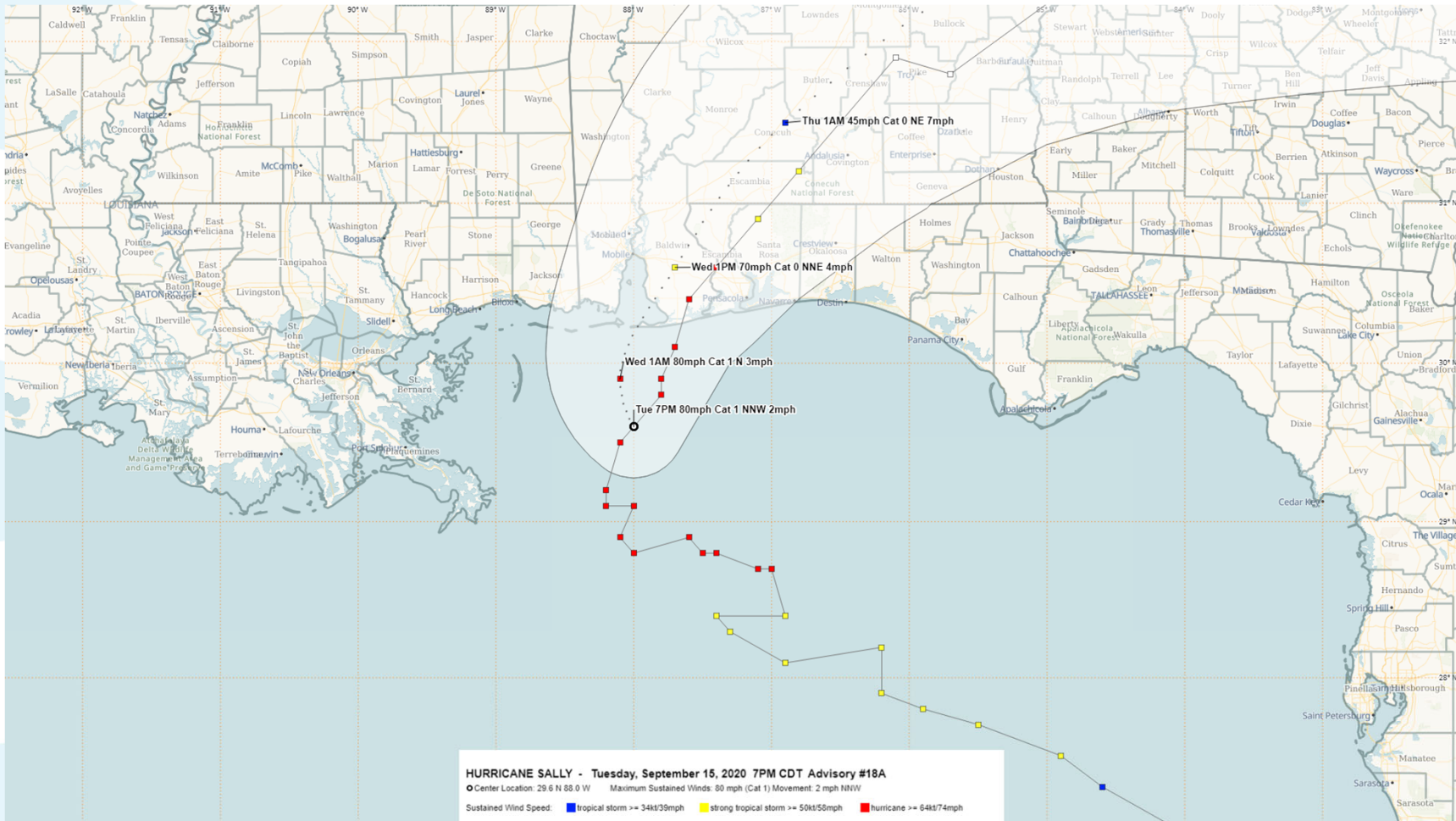
# Sally-2 Days Out



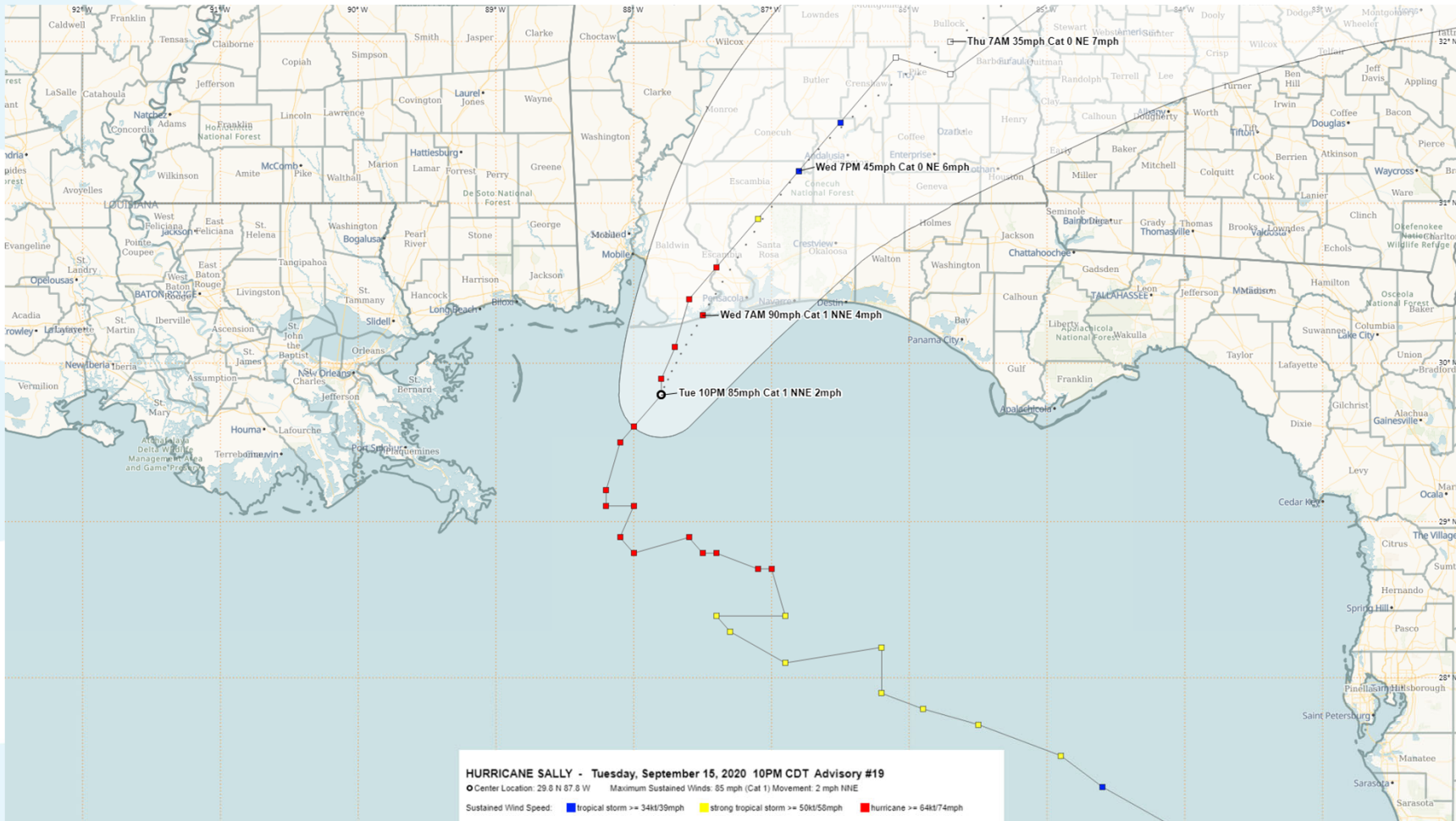
# Sally-1 Day Out



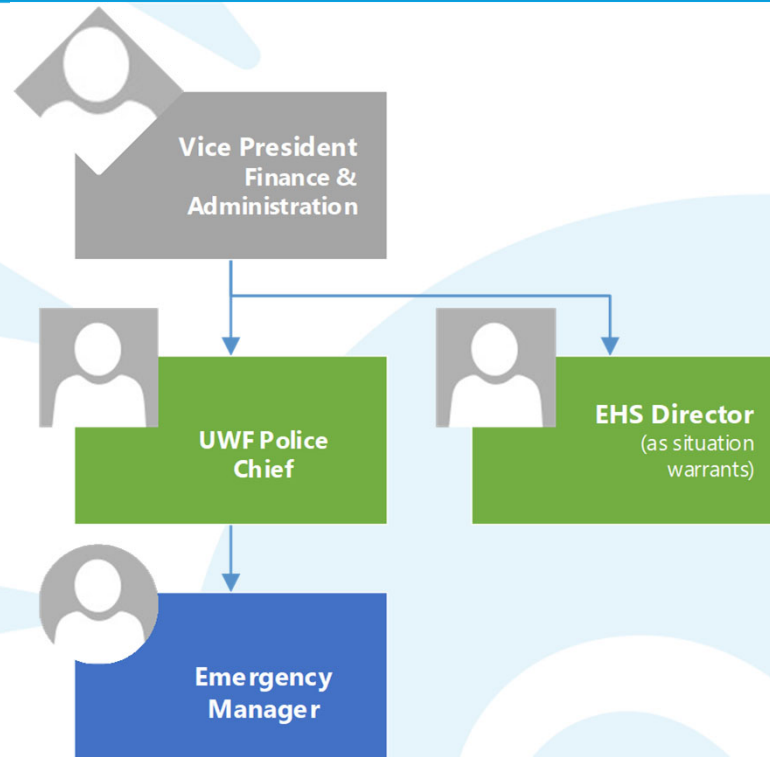
# Sally-12 Hours Out



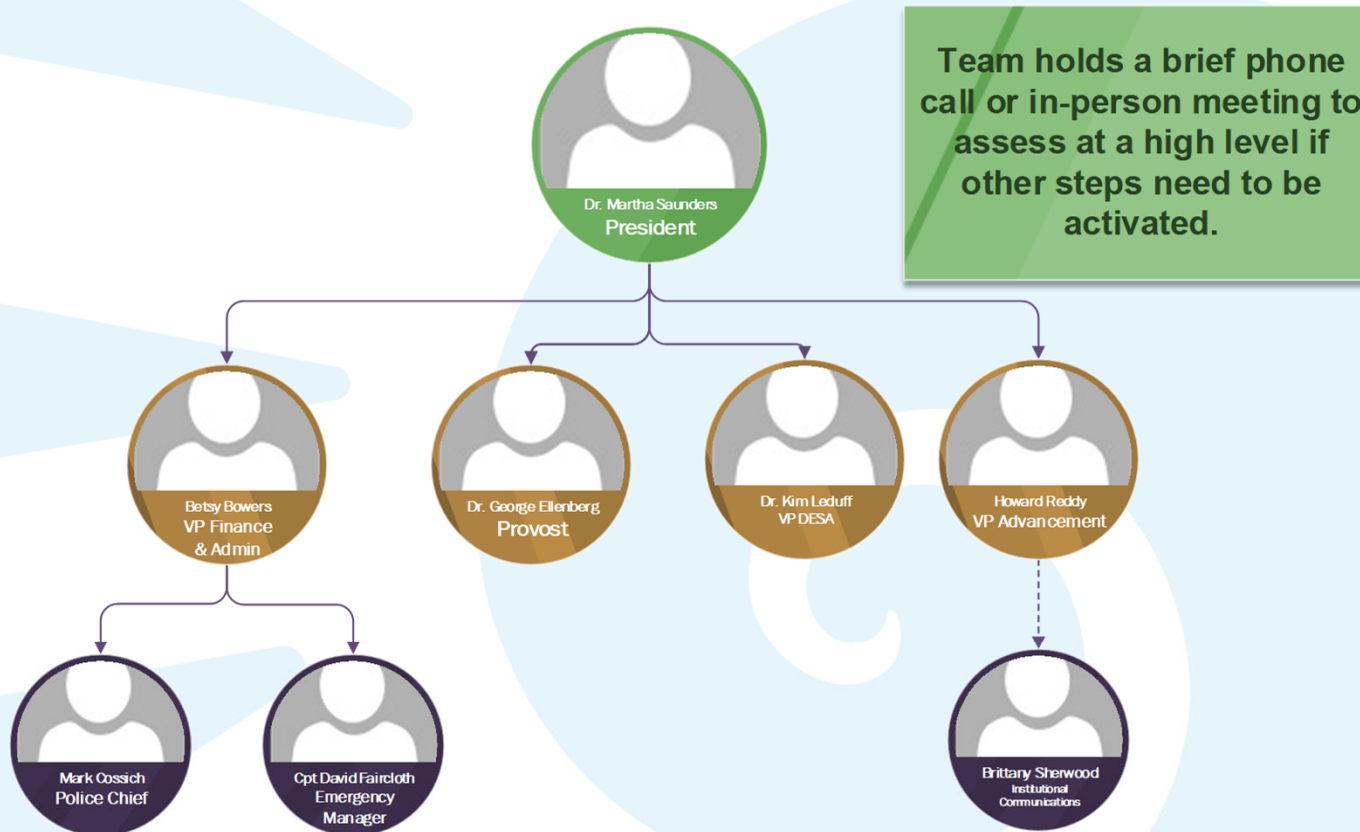
# Sally-Forecast and Actual Path in Agreement



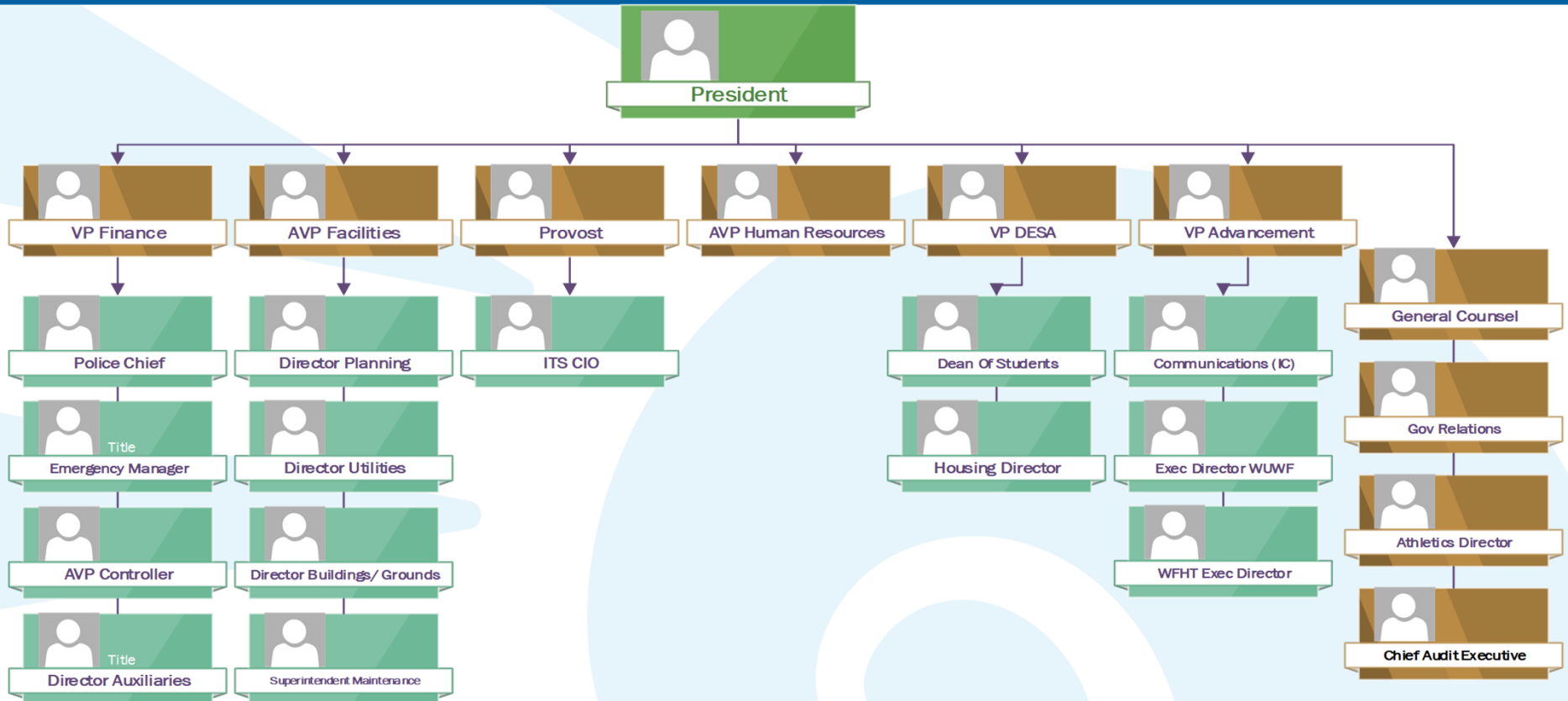
# UWF Emergency Management Structure



## Threat Assessment Team **Initial** Assessment



# Threat Assessment Team—Level 2



## Threat Assessment Team- Level 2 (preparing to **close campus**)

The Team holds brief phone calls or in-person meetings to discuss closing campus. Briefings are held after each national weather update. Closure activities are also coordinated with the Escambia County Emergency Operations Center notices.



# Start of Hurricane Season

- **UWF Emergency Operations Plan** updated annually
- Departments update **COOPs** and file with University Police/ VP Finance & Administration
- Essential personnel listing updated
- Recovery contractors agreements are in place
- Campus **kick-off meeting** for the season
- Departments obtain plastic sheeting to cover office equipment

# Hurricane Warning

- Emergency Management office engages with Escambia County Emergency Operations Center
  - Campus notified of potential closing
  - Emergency schedules created (police and facilities)
  - Campus construction and outdoor items secured
  - Offices notified to prepare workspaces (plastic sheeting, unplugging items, etc.)
  - PCard limits for key personnel increased
  - Shelter arrangements made for students in housing
  - Food service arranged for students on campus
-

# Hurricane Warning

- **Facilities Maintenance preparations**
    - Traffic lights removed
    - Natural gas line secured
    - Irrigation system secured
    - Banners removed
    - Water tower filled to 95% capacity
    - Vehicles/equipment prepared
    - Generators prepared
    - Etc.
  - **Information Technology preparations**
  - **Research preparations**
  - **Building Emergency Coordinators (BEC)**
    - <https://uwf.edu/finance-and-administration/departments/police/building-emergency-coordinators/roles-and-responsibilities/>
-

# Building Emergency Coordinators

The UWF Building Emergency Program was established to provide a point of contact in each department/college for safety and emergency preparedness information.

## BEC Roles and Responsibilities

UWF main campus includes 100+ buildings located over 1600 acres. Diverse campus facilities include academic buildings, a health center, a day care, secure research labs, apartment-style housing, theaters, and a plethora of other types of structures. Every assigned or occupied space on the UWF main campus has a Building Emergency Coordinator.

- Serve as a point of contact for safety and emergency preparedness information provided by UWF and other officials
- In the event of an incident in their building, serve as a liaison with the UWF Office of Emergency Management, the UWF Police Department, and other officials
- Ensure completion of closure procedures and checklists prior to a UWF closure
- Provide damage information to UWF following a large-scale incident (e.g., a hurricane)
- Act as an information conduit to building occupants for facilities related issues (e.g., scheduled utilities outages, building maintenance problems)
- Read and follow BEC emails and other forms of communication

## BEC Ground Rules

- Do not put yourself or others in danger - don't be a hero
- Follow all announcements from UWF and local officials
- Only wear BEC vest when there is a need to identify yourself and perform BEC functions
- Return to campus only when safe

## Building Emergency Coordinator (BEC) Facilities Liaison Activities

In their role as facilities liaisons, Building Emergency Coordinators should

- Serve as a building point of contact for the Facilities department
- Provide accurate and current information to building occupants
- Notify Facilities of building issues. Call (850) 857-6000.

### In this section

- [Notifications](#) +
- [Safety Tips](#) +
- [Services](#) +
- [Programs](#) +
- [Building Emergency Coordinators](#) -
  - [Roles and Responsibilities](#)
  - [Building Activities](#)
  - [Severe Weather](#)
  - [UWF Closures](#)
  - [Damage Assessment](#)
  - [Training](#)
- [Emergency Plans & Procedures](#) +
- [Crime Statistics](#) +
- [Clery / Campus Security Authorities \(CSAs\)](#) +
- [Sexual Offenders / Predators](#) +
- [Resources](#) +
- [About Us](#) +

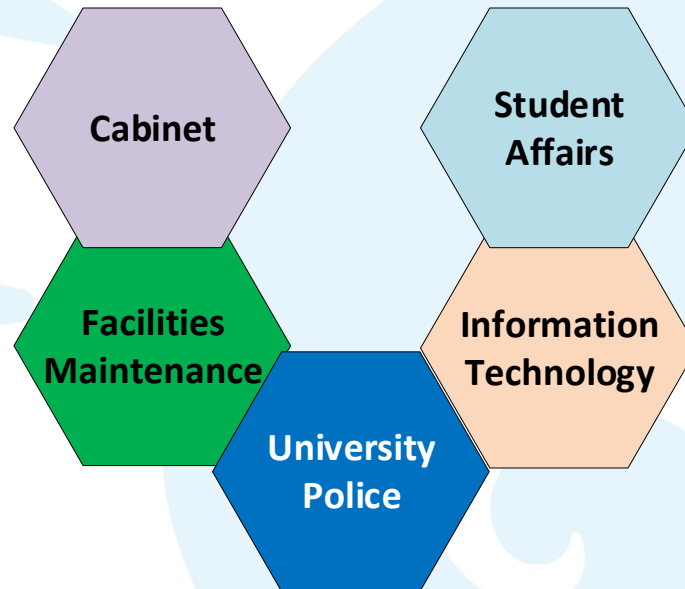
### UWF Police

Bldg. 94  
11000 University Parkway  
Pensacola, FL 32514  
850.474.2415  
[uwp@uwf.edu](mailto:uwp@uwf.edu)

# Am I essential personnel



**Employees that will, in the event of severe weather conditions, utilities/technology issues, or major emergency situations be required to work before, during and/or immediately after an incident occurs.**



**The Vice President or department head of my area makes the determination whether I am essential personnel or not.**

---

# Post Storm Activities

- Debris cleared from roadways
- Building assessments by Facilities Management team
  - Interior/exterior damage
  - Photographing damage
  - Estimating damage costs
- Begin repairs and ready campus
- Begin documentation for filing with FEMA/State insurance



- Enroll in the [Mobile Alert](#) page to receive text messages or email
    - **Argo Alert** (Imminent Danger)
    - **UWF Notice** (Non-Imminent Danger)
  - Desktop Alert
  - WUWF 88.1
  - UWF Website [www.uwf.edu](http://www.uwf.edu)
  - Social Media
    - [Twitter](#)
    - “Like” [UWF Facebook Page](#)
- Local Media (e.g., television, radio, social media)





**Captain David Faircloth**  
**850-474-2415**  
**[dfairclo@uwf.edu](mailto:dfairclo@uwf.edu)**  
**[www.uwf.edu/police](http://www.uwf.edu/police)**



**UWF Emergency Website: [news.uwf.edu](http://news.uwf.edu)**

---